



Ofsted
Outstanding
Provider

Kingsgate Primary School Newsletter

Wednesday 4 September 2024

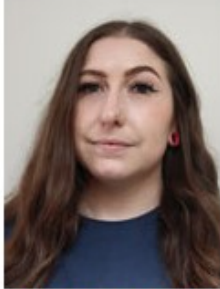
Dear parents and carers

Welcome back to a new and exciting year at Kingsgate. It was wonderful to see so many of you this morning. I would like to introduce the members of the senior leadership team so that you recognise them when you see them at the beginning and end of the school day.

Warm wishes,
Meg, Headteacher



Meg Jones
Headteacher



Natasha Masztalir
Deputy Head KS2



Paul Pritchard
Deputy Head EYFS KS1



Shelley Dunbar
School Business Manager



Rachel John
Inclusion Leader



Mike Ford
Assistant Head Y5 & Y6



Ellie Bulmer
Assistant Head Y3 & Y4



Kim Evans
Assistant Head KS1



Charlotte Paley
Assistant Head EYFS

Which gates to use at the start and end of the day?

KS2

8.20 am-8.30 am start of the day (drop off at gate)

Y3 & Y6 pupils use the Kingsgate Road gate (front)

Y4 & Y5 pupils use the Messina Avenue gate (side)

3.00 pm end of the day

Y3 pupils collected from their classroom door Y4-Y6 pupils from their class line on the playground

EYFS/KS1

8.50 am- 9.00 am start of the day

Reception & Y1 pupils use the Maygrove Road entrance

Nursery & Y2 pupils use the Liddell Place entrance

3.30 pm end of the day

Reception pupils collected from their class gate

Y1 & Y2 pupils collected from their class line on the playground