



29.03.18

Year 4

1. Read your reading book for 20 minutes each night.
2. Practise your times tables for 10 minutes each night on hit the button and complete your maths worksheet.
3. Practise your spellings.
4. If you can, play mathletics for about 10 minutes each night.
5. Practise your Ukulele every night for 5-10 minutes

Spellings:

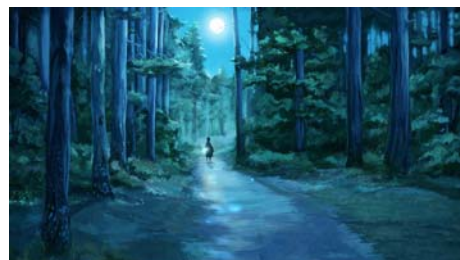
weight	popular	breathe	exercise
purpose	various	extreme	although
therefore	century	centre	perhaps

Writing Homework:

After the Easter holidays, we are going to start our new book called, 'Shadow Forest'.

Draw/Paint/Collage some forest artwork.

Write sentences to describe the forest.



Homework due: 17.04.18





29. 03.18

Year 4

1. Read your reading book for 20 minutes each night.
2. Practise your times tables for 10 minutes each night on hit the button and complete your maths worksheet.
3. Practise your spellings.
4. If you can, play mathletics for about 10 minutes each night.
5. Practise your Ukulele every night for 5-10 minutes

Practise these spellings:

all _____

can _____

up _____

my _____

what _____

Read your reading book for this week.

Homework due: 17.04.18



Maths Homework

29.03.18

An Amazing Fact a Day

Negative Numbers and Temperature

Amazing Fact

The warmest temperature ever recorded at the South Pole was a freezing -12.3°C in December 2011, making it one of the coldest places on Earth.

Challenge

Complete the activities using negative numbers in a temperature context.

1. Put these temperatures in order, the coldest first.

a. 2°C , -8°C , -1°C , -6°C , -4°C

b. 6°C , 10°C , -15°C , -11°C , 14°C

c. 16°C , 18°C , -23°C , -25°C , -13°C , 12°C , 20°C

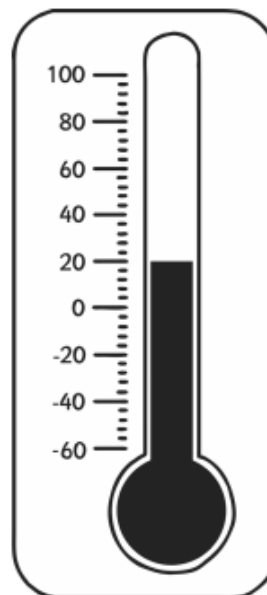
2. Which of these temperatures is lowest?

a. -4°C or -2°C

b. -8°C or 8°C

c. -16°C or -17°C

d. -5°C or -6°C



Maths Homework
29.03.18

Read write and say these numbers:

0, 2, 4, 6, 8, 10, 12, 14, 16, 18, 20

An Amazing Fact a Day

Negative Numbers and Temperature

3. Answer the questions below:

a. The temperature rises by 15 degrees from -4°C . What is the new temperature?

b. The temperature falls from 11°C to -2°C . How many degrees does the temperature fall?

c. The temperature is 6°C . It falls by 8 degrees. What is the temperature now?

d. The temperature is -3°C . How much must it rise to reach 5°C ?

e. What is the difference in temperature between -4°C and 14°C ?

f. The temperature was -5°C . It falls by 6 degrees. What is the temperature now?

g. The temperature is -11°C . It rises by 2 degrees. What is the temperature now?

h. The temperature is -20°C . How much must it rise to reach -5°C ?

You could also try to find out:

- which places, if any, are colder;
- how scientists based at the South Pole survive the cold;
- when, and for how long, the South Pole gets sunshine;
- where the hottest place on Earth is.

